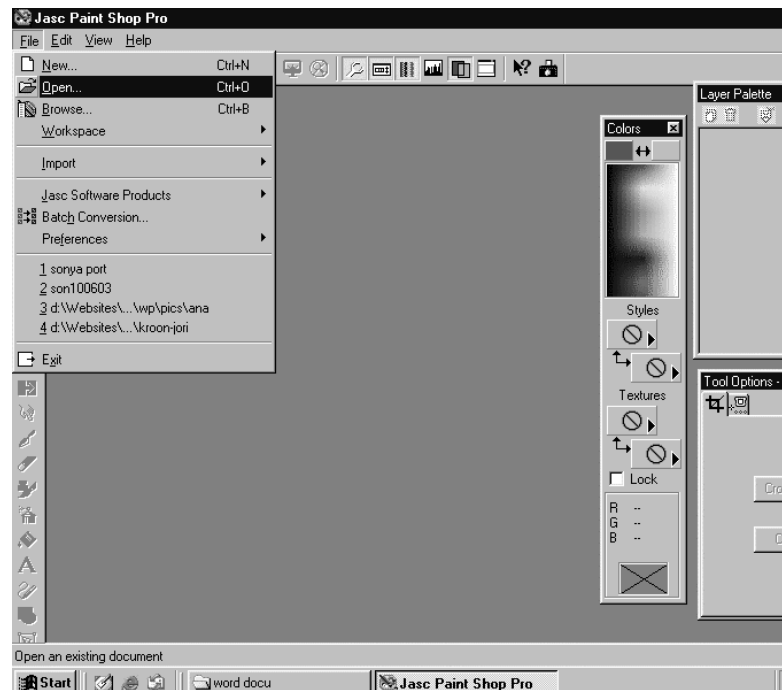


COMPUTER MANIPULATION FOR POPART WORKSHOP

PAINT SHOP PRO 8

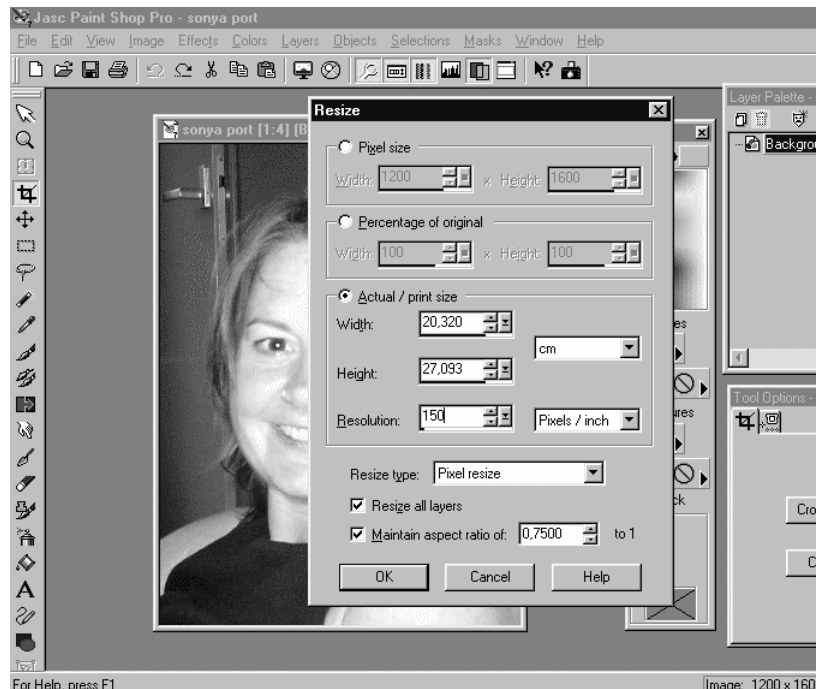
1. OPENING THE IMAGE



FILE
OPEN
search for your file and
DOUBLE CLICK

DUPLICATE YOUR BACKGROUND BY DRAGGING IT TO THE LAYER SYMBOL IN THE LAYER PALETTE. SET THE BACKGROUND LAYER OUT

See demonstration in the lesson.



IMAGE

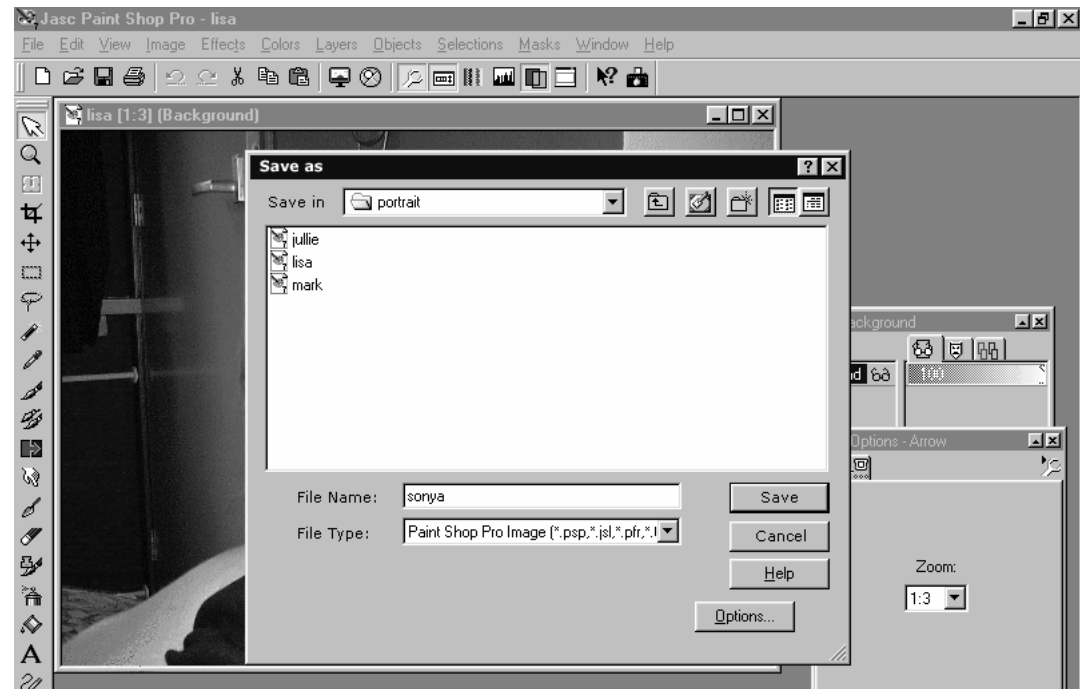
RESIZE

CLICK ON THE
Actual/print size box

CHANGE THE
Resolution to 150

CLICK OK

2. SAVING YOUR FILE



3. PREPARING THE PHOTO

Go to

FILE

SAVE AS

Find today's WORKING FILE called PORTRAIT

GIVE YOUR WORK A TITLE
(your name in this case would be appropriate)

Scroll through the FILE TYPE until you find the PSP FILE (PAINT SHOP PRO IMAGE)

CLICK

Click on SAVE

From now on you only have to press CTRL S

(. . . and your work will be saved. Remember to do this continually throughout the lesson)



Click on the LASSO TOOL and with the LEFT HAND MOUSE BUTON held continuously in draw around the outline of your image

DON'T WORRY IF IT ISN'T PERFECT

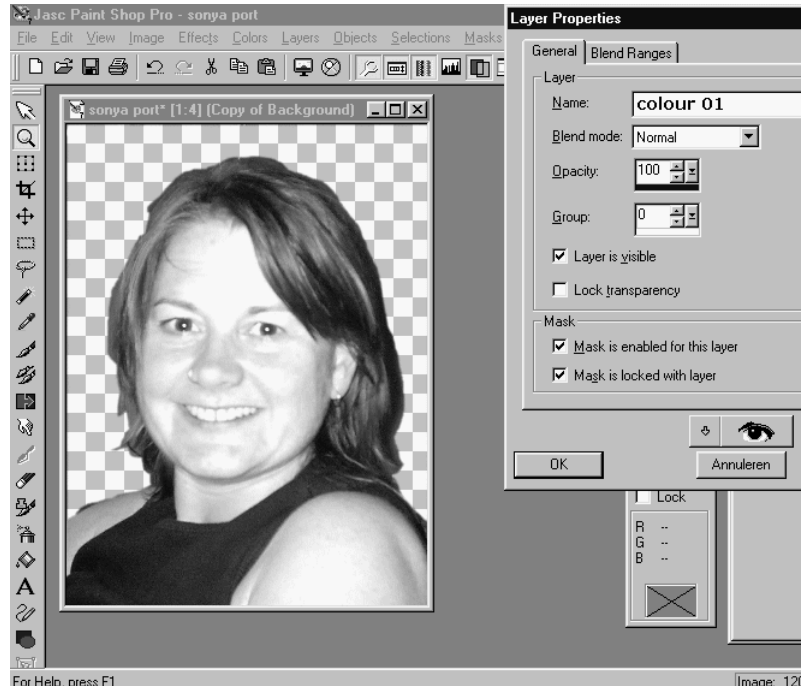
With the SHIFT KEY held down you can ADD new selections and

With the CTRL KEY held down you can DELETE sections from your previous selection

See demonstrations in the lesson.

Press SHIFT CTRL I (this inverts the selection)
CTRL X (the background is now deleted)
CTRL D (the selection is now deselected)
COPY THIS LAYER TWICE
CTRL S

4. BACKGROUND / FIRST COLOUR



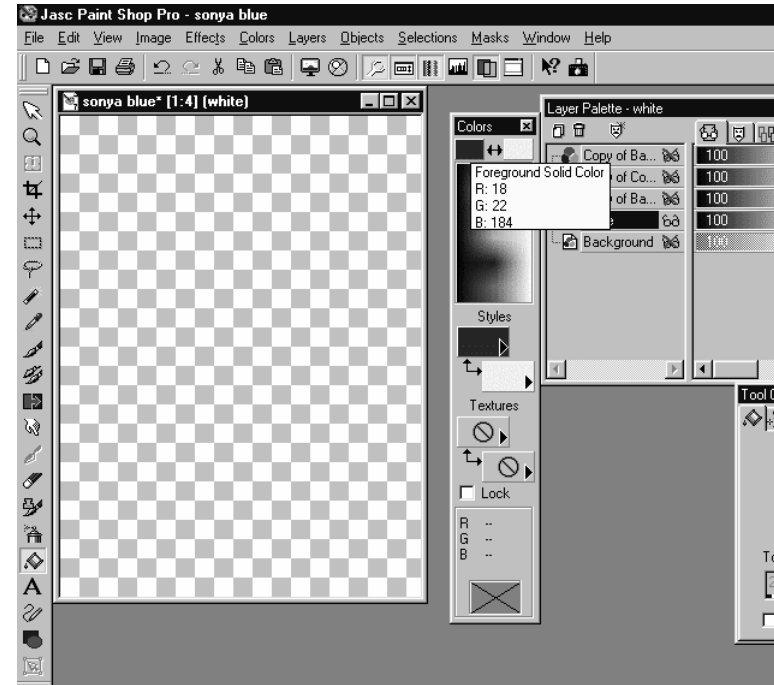
Make a new layer by clicking once on the layer symbol in the LAYER PALETTE box and call it COLOUR 01

Drag the COLOUR 01 LAYER to the 2nd position in the layer palette

SET ALL OTHER LAYERS OUT

NOTE: You should now have a total of five layers

CTRL S



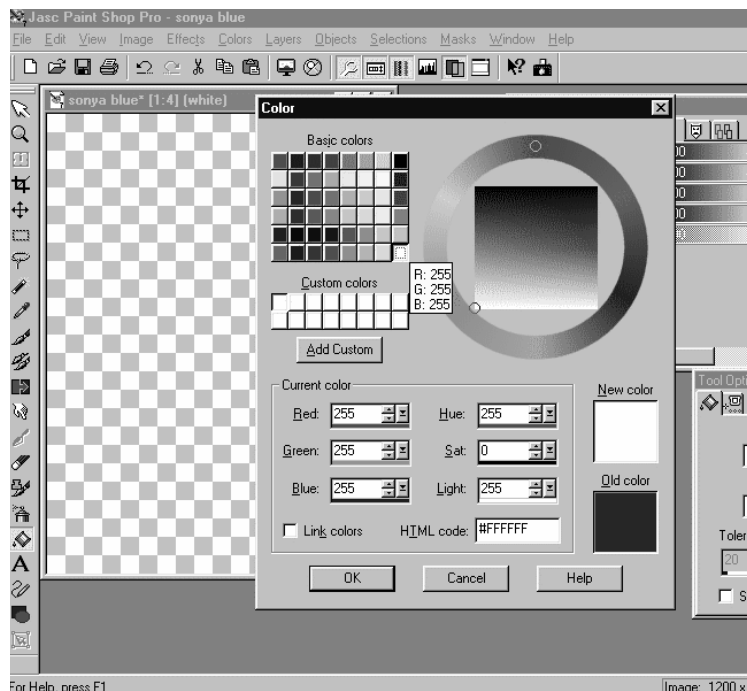
Click on the FLOOD FILL TOOL

Move the cursor to the first colour box (top left) of the COLOURS PALETTE

An EYE DROPPER symbol will appear

CLICK ONCE

These are the five colour codes we will be using today.
WHITE:#FFFFFF
YELLOW: #E5B90B
RED:#BF1B42
BLUE:#1216B8
BLACK:#000000



Fill in the corresponding HTML CODE for your designated background colour

(See your own chart issued at the beginning of the workshop)

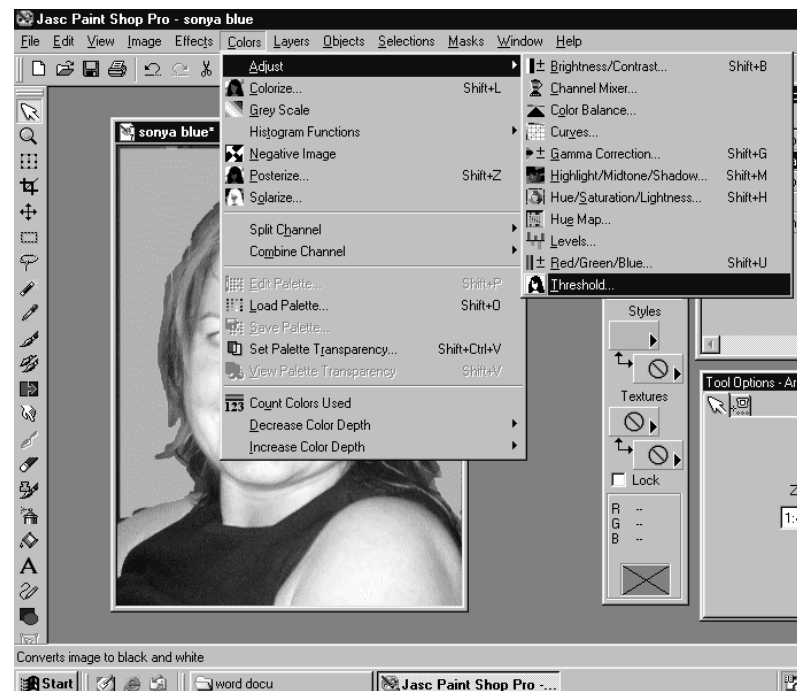
CLICK OK

Drag the cursor over the image.
A PAINT CAN will appear.

CLICK ONCE

The background is now completely filled with your first colour

5. THIRD LAYER / SECOND COLOUR



Click on the THIRD LAYER

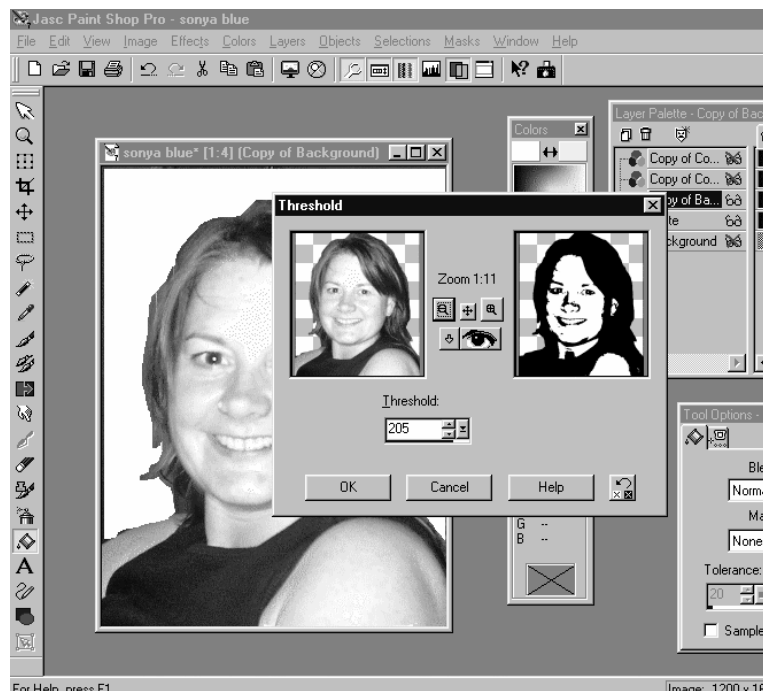
THIS IS NOW ACTIVE (the red cross is removed from the glasses)

Go to COLORS

ADJUST

THRESHOLD AND CLICK

By pressing the plus or minus zoom icon you can ZOOM IN and OUT
ZOOM OUT (the minus) to see your whole face



Set the THRESHOLD to a number somewhere between 200 and 210
You must have enough details on your face to recognize that it is you.

CLICK OK

Make a copy of this layer and drag it to the top of the Layer Palette

DOUBLE CLICK on this layer and change the name to FACE

SET THE LAYER OUT

CTRL S

CLICK on the THIRD LAYER again

Click on the MAGIC WAND TOOL

Click on a BLACK SECTION of your image



A ring will appear around this selection

To ensure that all black is selected go to

SELECTIONS

MODIFY

SELECT SIMILAR

This selection will now become the second colour on your colour sheet

6. FOURTH LAYER / THIRD COLOUR

Click on the FLOOD FILL TOOL

Place cursor over COLOUR BOX and click when the EYE DROPPER appears

Fill in the HTML CODE in for your SECOND COLOUR

CLICK OK

Set the cursor over the BLACK SELECTION in your image and CLICK (The black colour should now be changed to your second colour)

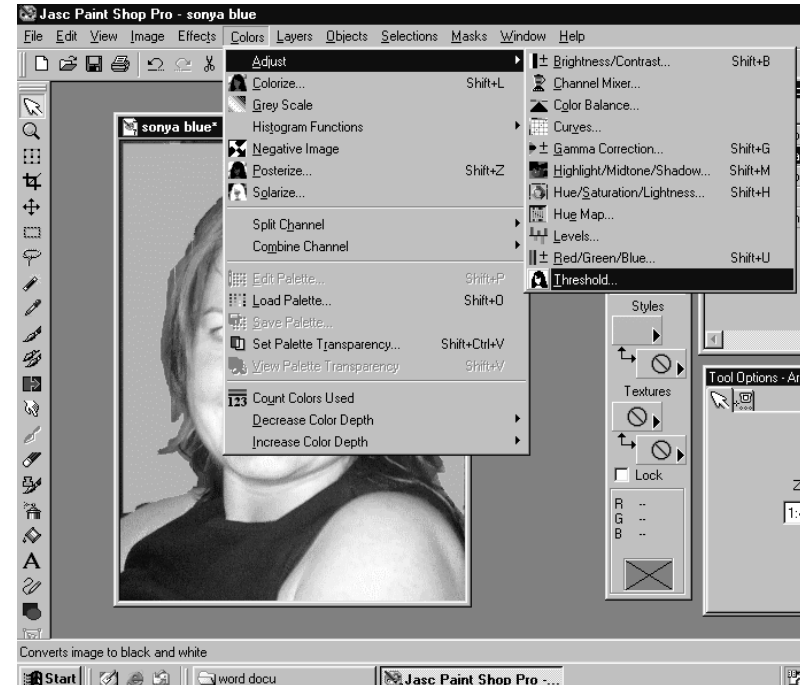
Press CTRLR SHIFT I (this inverts the selection so that all white areas are selected)

CTRL X (this deletes or cuts away all the white areas)

CTRL D (this deselects your selection)

DOUBLE CLICK ON THE LAYER and change the name to COLOUR 02

SET THE LAYER OUT and press CTRL S



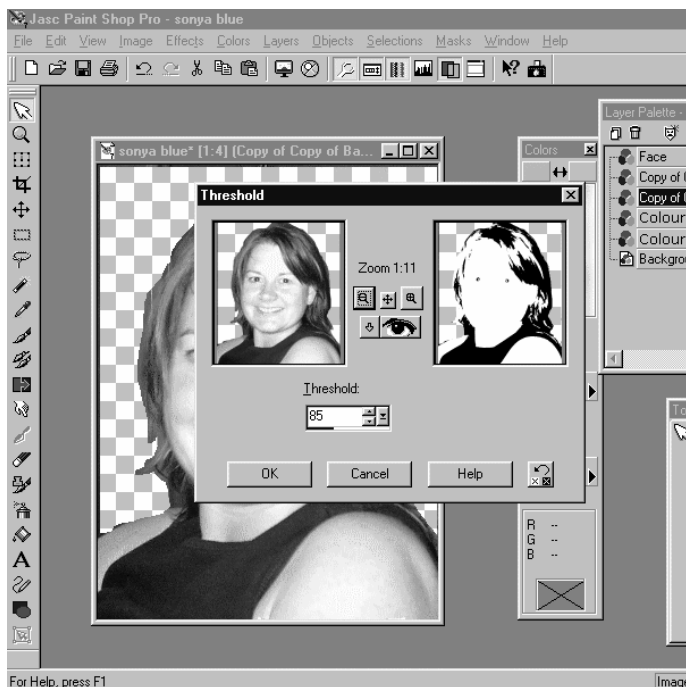
Click on the FOURTH LAYER

THIS IS NOW ACTIVE (the red cross is removed from the glasses)

Go to COLORS

ADJUST

THRESHOLD AND CLICK



ZOOM OUT
to see your whole face

Set the THRESHOLD to a
number somewhere between
75 AND 90

You should have
good hair highlights and
minimal facial features

CLICK OK

REPEAT THE PROCEDURE
ON PAGE 7 FOR YOUR
THIRD CHOSEN COLOUR

Remember to name the layer
COLOUR 03

CTRL S

7. FIFTH LAYER / FOURTH COLOUR

Create a NEW LAYER and name it COLOUR 04

Click once on the COLOUR 02 layer

Click on the MAGIC WAND TOOL and then somewhere on the EMPTY BACKGROUND
(of COLOUR 02 layer)

CTRL SHIFT I (inverts the selection)

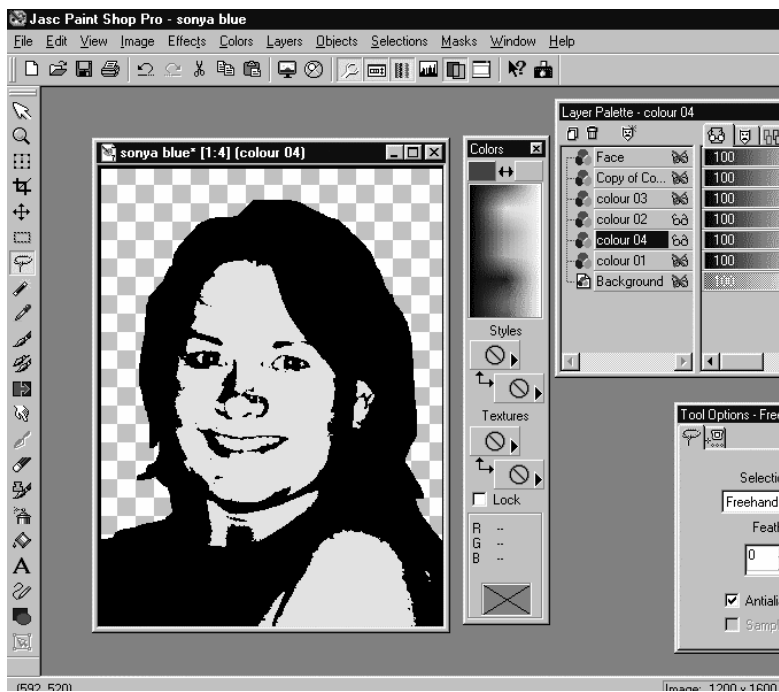
Click once on COLOUR 04 layer

Click on the FLOOD FILL TOOL

Place the cursor over the COLOUR BOX and click when the eye dropper appears

Fill the HTML CODE in for the FOURTH AND FINAL COLOUR ON YOUR LIST

CLICK OK



Drag the cursor over the selection. A PAINT CAN will appear.

CLICK ONCE.

The selection is now filled with the fourth colour.

Drag this layer to the THIRD POSITION in your LAYER PALETTE

SET ALL LAYERS OUT and press CTRL D followed by CTRL S

8. ISOLATING THE FACIAL FEATURES

Click on the FACE LAYER

Click on the MAGIC WAND TOOL

Click on a WHITE SECTION in the image
To make sure that all white elements are selected go to

SELECTIONS

MODIFY

SELECT SIMILAR

CTRL X (All white areas are now deleted or cut away)

Click on the LASSO TOOL

With the LEFT HAND MOUSE BUTTON held continuously in draw an outline around the facial features

DON'T WORRY IF IT ISN'T PERFECT

With the SHIFT KEY held down you can ADD new selections

and

With the CTRL KEY held down you can DELETE sections from your previous selection

See demonstration in the lesson.

Press SHIFT CTRL I (this inverts the selection)

CTRL X (everything except the facial features is now deleted)

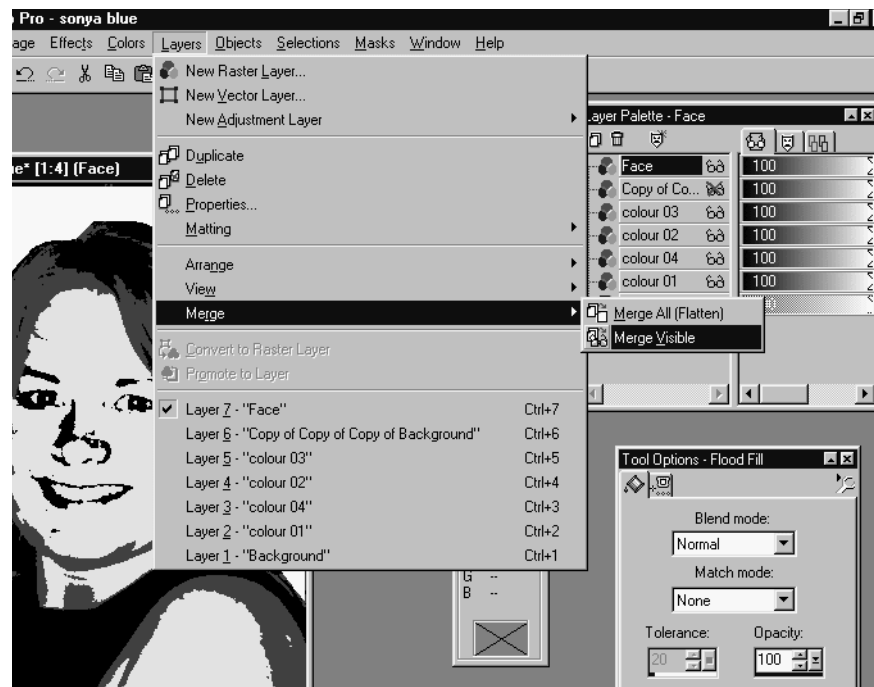
CTRL D (the selection is now deselected) and press CTRL S

SET ALL LAYERS ON except the 6th LAYER or the BACKGROUND LAYER and the COPY OF THE BACKGROUND LAYER

EXAMPLE:

Face	on
Copy of Co...	out
Colour 03	on
Colour 02	on
Colour 04	on
Colour 01	on
Background	out

9. MERGING ALL USABLE LAYERS



Go to

LAYERS

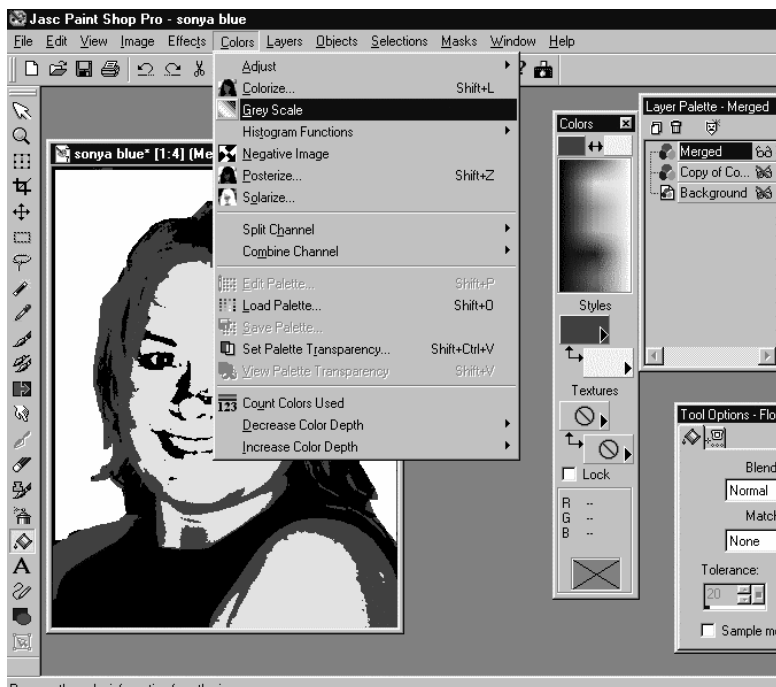
MERGE

MERGE

VISIBLE

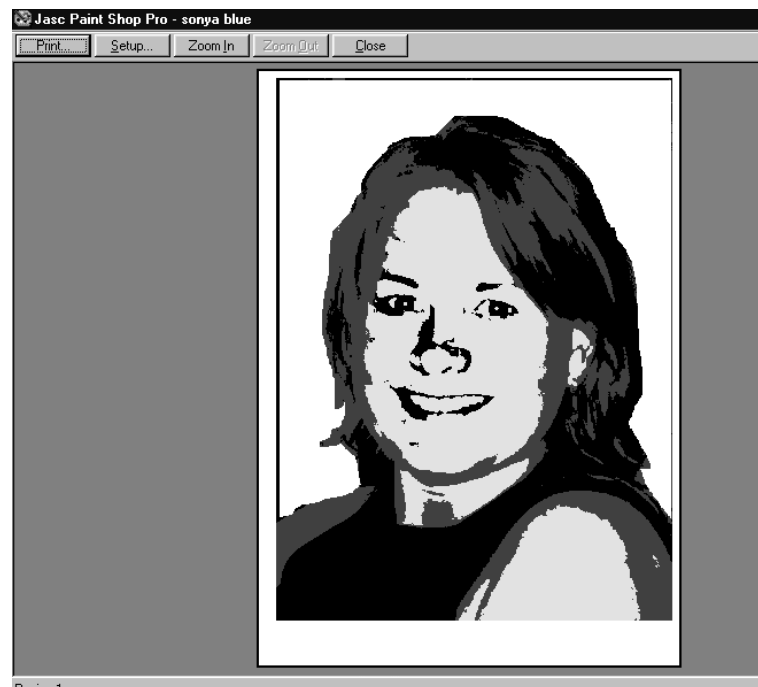
CLICK

10. CHANGING TO A GREY SCALE READY FOR PRINTING



- Go to
- COLOR
- GREYSCALE
- CLICK
- FILE
- SAVE AS
- use the same name plus add grey at the end
- SAVE

11. PRINTING



- Go to
- FILE
- PRINT PREVIEW (check that it is correct)
- Click PRINT
- Click OK
- Once it has finished sending the print job to the printer.....
- CTRL S
- FILE
- EXIT